

LEVELLING SYSTEMS

► PUSH & LEVEL SYSTEM

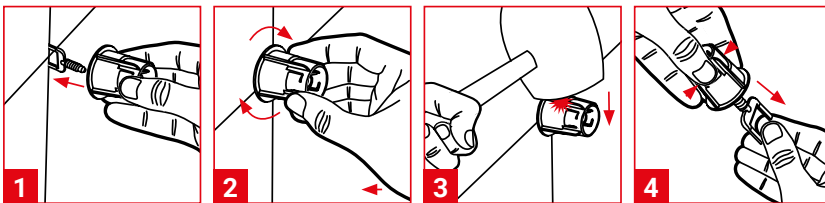
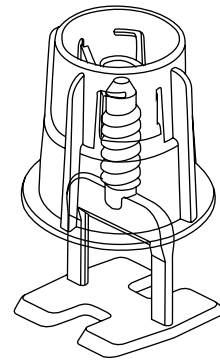
1 SAVE TIME:
You will be able to level out the floor tiles easily and quickly with just your hands. You won't need any other tools and you can reach all the corners.

2 NO MORE BUMPS BETWEEN FOR TILES:
You will guarantee the level of your work.

3 LEAVE THE TILE JOINTS CLEAN:
Clean break guarantee thanks to using pure quality Bellota materials.

HOW DO YOU USE IT?

1. Insert the crosshead and press the push until it comes into contact with the floor tile.
2. Level out by making a small circular movement.
3. Always break in the direction of the tile joint.
4. Reuse the bellota push system.



	Reference	Description		Box	Packing unit
	LSSKIT010	Kit PUSH 1 mm		100 Crosshead 50 Pushes	-
	LSSKIT020	Kit PUSH 2 mm		100 Crosshead 50 Pushes	-
	LSSKIT030	Kit PUSH 3 mm		100 Crosshead 50 Pushes	-
	LSS005	Crosshead PUSH 0,5 mm for 6-13 mm tiles.		200	2.000
	LSS010	Crosshead PUSH 1 mm for 6-13 mm tiles.		200	2.000
	LSS020	Crosshead PUSH 2 mm for 6-13 mm tiles.		200	2.000
	LSS030	Crosshead PUSH 3 mm for 6-13 mm tiles.		200	2.000
	LSS010S	Crosshead PUSH 1 mm for 13-20 mm tiles.		200	2.000
	LSS020S	Crosshead PUSH 2 mm for 13-20 mm tiles.		200	2.000
	LSS030S	Crosshead PUSH 3 mm for 13-20 mm tiles.		200	2.000
	LSS040S	Crosshead PUSH 4 mm for 13-20 mm tiles.		200	2.000
	LSS050S	Crosshead PUSH 5 mm for 13-20 mm tiles.		200	2.000
		LSS010CROSS	PUSH crosshead for 1 mm cross shaped spacer for 6-13 mm tiles.	You will save time and pieces	200
LSS020CROSS		PUSH crosshead for 2 mm cross shaped spacer for 6-13 mm tiles.	200		2.000
LSS030CROSS		PUSH crosshead for 3 mm cross shaped spacer for 6-13 mm tiles.	200		2.000
	LSS010T	PUSH crosshead for 1 mm T-shape spacer for 6-13 mm tiles.	You will save time and pieces	200	2.000
	LSS020T	PUSH crosshead for 2 mm T-shape spacer for 6-13 mm tiles.		200	2.000
	LSS030T	PUSH crosshead for 3 mm T-shape spacer for 6-13 mm tiles.		200	2.000
	LSSCREW	PUSH		100	500
	LSPLATE	Use the base for thin floor tiles of up to 3 mm. The Push system will help you level out the surface and you won't mark the ceramic tiles.		100	-

LEVELLING SYSTEMS

▶ WEDGE SYSTEM

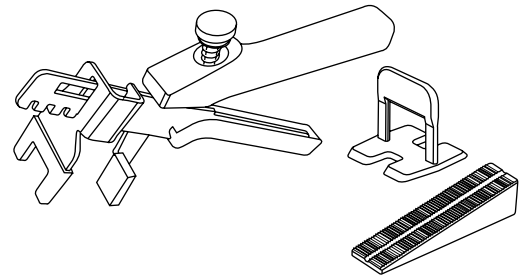
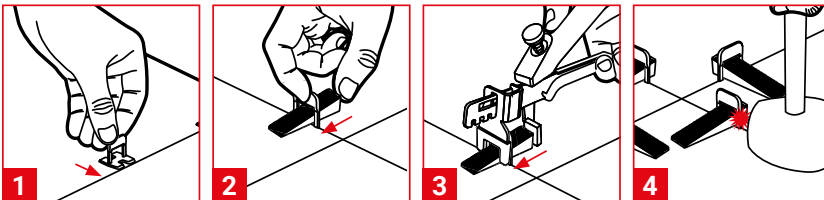
1 LEVEL OUT EASILY WITH THE HELP OF THE PLIERS:
The wide wedge enables you to exert more pressure and eliminate any bumps between the floor tiles.






2 NO MORE BUMPS BETWEEN FLOOR TILES:
You will guarantee the level of your work.

3 LEAVE THE TILE JOINTS CLEAN:
Clean break guarantee thanks to using pure quality Bellota materials.

HOW DO YOU USE IT?

1. Insert the crosshead between the adhesive and the tile.
2. Put the wedge into the cross head.
3. Level out the tile with the pliers.
4. Break in the direction of the tile joint.



	Reference	Description	Box	Packing unit
	LSWKIT010	Kit WEDGE SYSTEM 1 mm + Plier	100 Crosshead 100 Wedge 1 Plier	-
	LSWKIT020	Kit WEDGE SYSTEM 2 mm + Plier	100 Crosshead 100 Wedge 1 Plier	-
	LSWKIT030	Kit WEDGE SYSTEM 3 mm + Plier	100 Crosshead 100 Wedge 1 Plier	-
	LSPLIER	Plier	1	40
	LSW005	WEDGE crosshead 0,5 mm for 6-13 mm tiles.	250	2.500
	LSW010	WEDGE crosshead 1 mm for 6-13 mm tiles.	250	2.500
	LSW015	WEDGE crosshead 1,5 mm for 6-13 mm tiles.	250	2.500
	LSW01502000	WEDGE crosshead 1,5 mm for 6-13 mm tiles.	2.000	-
	LSW020	WEDGE crosshead 2 mm for 6-13 mm tiles.	250	2.500
	LSW0202000	WEDGE crosshead 2 mm for 6-13 mm tiles.	2.000	-
	LSW030	WEDGE crosshead 3 mm for 6-13 mm tiles.	250	2.500
	LSW0302000	WEDGE crosshead 3 mm for 6-13 mm tiles.	2.000	-
	LSW010S	WEDGE crosshead 1 mm for 13-20 mm tiles.	250	2.500
	LSW020S	WEDGE crosshead 2 mm for 13-20 mm tiles.	250	2.500
	LSW030S	WEDGE crosshead 3 mm for 13-20 mm tiles.	250	2.500
LSW040S	WEDGE crosshead 4 mm for 13-20 mm tiles.	250	2.500	
LSW050S	WEDGE crosshead 5 mm for 13-20 mm tiles.	250	2.500	
	LSWEDGE	Wedge	200	2.000
	LSPLATE	Use the base for thin floor tiles of up to 3 mm. The wedge system will help you level out the surface and you won't mark the ceramic tiles.	100	-